

LSU HILLTOP ARBORETUM is a 14-acre museum of plants with an extensive collection of more than 150 species of southern native trees, shrubs and wildflowers. The property was originally purchased in 1926 by Emory Smith and his wife, Annette as a working farm and country retreat.

Emory donated the property to LSU in 1981 so that his "Hilltop" could become an arboretum of native plants, and to encourage its free use by both the University and general public. The visitor will find not only a place of learning, but a quiet place, far removed from the pressure of life; a space of solace and contemplation.



Ravines



Titi (10' x 8' Average)

Cyrilla racemiflora

Native, semi-evergreen small tree with a short trunk with broad-spreading, irregular branches. Canopy varies from dense to open depending on light and competition. Simple, willow-like alternate leaves, normally clustered at the end of twigs. Axillary, racemes are slender, nodding in clusters four to six inches long. Fragrant creamy-white blooms May to June.



Prickly Ash (30' x 20' Average)

Zanthoxylum clava-herculis

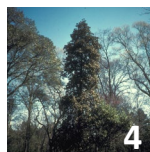
Native, deciduous tree with raised, cone-shaped, corky, spine-tipped growths on the trunk and large branches. Broad, open canopy with odd-pinnately compound leaves, seven to fifteen inches long. Prefers full sun and well-drained soil. Early settlers chewed the growth on the trunks to release sap to relieve toothache pain. Larval host plant for the Giant Swallow Tail Butterfly.



Oakleaf Hydrangea (6' x 4' Average)

Hydrangea quercifolia

Native, deciduous shrub, highly sensitive to heavy, clay soils. Favors slopes along sandy streams but does well in moist and sandy loam soil. Good surface and internal drainage are essential. The flowers are a foot long with creamy-white petals, turning pink then brown. Needs considerable sunlight, especially morning sun for prolific flowering.



'Emory Smith' Magnolia (40' x 25' Average)

Magnolia grandiflora 'Emory Smith'

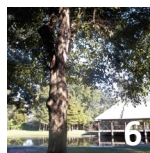
Native, evergreen tree that thrives in a loose, moist, fertile, and acid soil in full sunlight to partial shade. The 'Emory Smith' magnolia, a cultivar of the Southern Magnolia, is registered with the International Magnolia Society and named in honor of Hilltop's donor Emory Smith.



Southern Sugar Maple (35' x 20' Average)

Acer Barbatum

Native, deciduous tree with an iconic maple leaf that turns a brilliant yellow color in the fall. It grows best in full sun to partial shade and adapts to a wide range of soil conditions. The Southern Sugar Maple was designated as a "Louisiana Super Plant" in 2013 by the LSU AgCenter.



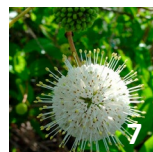
Ironwood (20' x 15' Average)

Carpinus caroliniana

Native, deciduous tree, with rounded form with broad horizontal branching sometimes arching downward. It has distinctive smooth gray bark with strained muscle-like ripples that spiral around the trunk. It has fine textured foliage with yellow autumn color. The growth rate is slow with variable adaptability to growing conditions from full sun to relatively heavy shade.



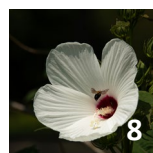
Pond Walk



Buttonbush (10' x 8' Average)

Cephalanthus occidentalis

Native, deciduous shrub or small tree with a spreading crown. The white, round flowers are two inches in diameter and bloom on terminal clusters. The plant is very adaptable to site conditions. It grows in full sun to partial shade, and in water or well-drained garden soil. It is a host plant for moths including the Titan Sphinx, Hydrangea Sphinx, and Royal Walnut Moth.



Woolly-Rose Mallow (7' x 3' Average)

Hibiscus lasiocarpus

Native, shrub-like perennial that thrives in a heavy, wet soil in full sunlight, and especially well adapted to woodland edges. A nice plant for the rear of the perennial border, native plant garden, patio area or courtyard. Also effective when grouped in moist locations such as along the edge of a pond. The funnel-shaped white to pink flowers have a maroon throat similar to a hibiscus.



Pickerel Weed (2' Average)

Pontederia cordata

Native, aquatic plant with erect heart-shaped, dark olive-green leaves. It grows in shallow water no more than a foot deep. In the home garden, pickerel weed will complement water lilies by adding texture and height. The flower spikes are deep blue to purple and rise above the foliage with repeat blooming, summer through fall.



Meadow

After years of planning our dream for having a Cajun Prairie inspired meadow, it is being realized in 2020. The 3-acre meadow is divided into four areas (A-D) with mowed grass pathways for strolling to allow visitors to experience a rich diversity of native annual and perennial flowers in a patchwork of grasses. Hydric swales, located on the perimeter of the four meadow areas delineate the spaces, provide drainage, and a unique growing environment for plants that thrive in wet/moist conditions. An earthen amphitheater anchors the northwest corner of the meadow where visitors can sit back and enjoy a bird's eye view, take photographs, read a book or enjoy a picnic lunch.

Keep in mind the meadows are still in their infancy. The management plan includes removing invasive plants as identified and needed. To manage the woody growth and cut down the grasses at the end of the growing season, bush-hogging is implemented once a year in December after additional meadow seeds are planted. The cutting process settles the seeds to the ground and the cut grass acts as mulch bedding down the seeds until germination in the spring. Volunteers called the Meadow Keepers, students from the LSU Robert Reich School of Landscape Architecture, collect seeds from other Cajun Prairies around the state and plant them in the meadow. Dr. Charles Allen, one of the foremost experts on Cajun Prairies in the state is guiding the development and maintenance strategy, and says it will take ten years for the planting to reach maturity.

Summer is here and insects are buzzing! Butterflies are flying! Birds are nesting! Visit often to watch the meadow grow and flourish with the changing seasons and years.



Plains Coreopsis



Lemon Beebalm



Partridge Pea



Indian Blanket



Mist Flower

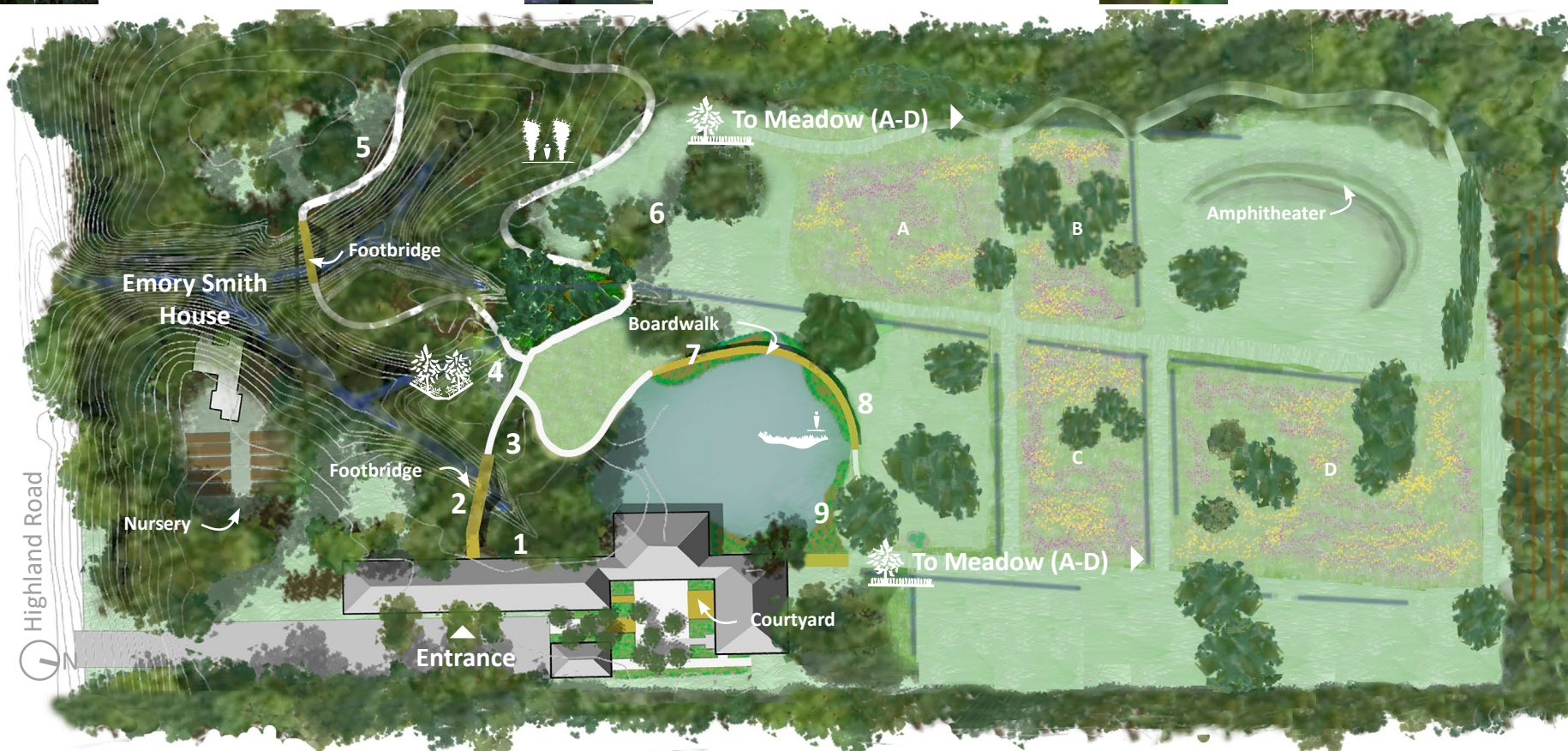


Gulf Fritillary



Hodge Podge Nursery

After a tour of the grounds visit the Hodge Podge Nursery for a great selection of native, adapted and pass-along plants grown by volunteers as a fundraiser for the Arboretum. Many of the plants in this brochure can be found in the nursery. The Hilltop staff (Tuesday-Friday from 9am-4:30pm) and nursery volunteers (Wednesdays from 9am-11am) are always happy to help you make the best selection. We are keeping with Emory Smith's tradition of growing plants for all to enjoy!





The Friends of Hilltop Arboretum is an independent non-profit organization that works in partnership with the LSU Robert Reich School of Landscape Architecture to preserve, protect and enhance Hilltop. Established in 1982, with thoughtful guidance from founder and benefactor Emory Smith, memberships from the Friends of Hilltop Arboretum make up about 20% of our annual operating budget. Memberships make it possible to further develop the site into a nationally recognized center for the study of native plants and landscape design. They also help us get kids outdoors, cultivate native trees and shrubs, and provide enriching educational opportunities for the entire community.

LSU HILLTOP ARBORETUM

Grounds open to public to enjoy the landscape and unique plant collection.

Site	Office
Open Daily	Tuesday-Friday
Dawn to Dusk	9am- 4:30pm
No Unauthorized Activities or Groups	
Check website calendar for closures during private events.	

- Inside**
- Summer Plant Guide
 - Self-Guide Tour Map
 - Join Friends of Hilltop

Located at 11855 Highland Road
(Between Bluebonnet and Siegen)
P.O.Box 82608, Baton Rouge, 70884

Phone 225-767-6916
Fax 225-768-7740
Web: www.lsu.edu/hilltop
Email: hilltop@lsu.edu

Visit www.lsu.edu/hilltop for visitor rules, facility rental and professional photography fees, a complete list of activities , events, and programs.

Membership Form

Yes! I wish to become a member of the Friends of Hilltop Arboretum. Here is my annual membership contribution of:

- Membership level** (Choose One):
- | | | | |
|----------------------------------|-------|-----------------------------------|---------|
| <input type="checkbox"/> Violet | \$35 | <input type="checkbox"/> Magnolia | \$250 |
| <input type="checkbox"/> Azalea | \$50 | <input type="checkbox"/> Cypress | \$500 |
| <input type="checkbox"/> Redbud | \$75 | <input type="checkbox"/> Live Oak | \$1,000 |
| <input type="checkbox"/> Dogwood | \$100 | | |

Membership & Payment Information

Name _____

Address _____

City/State/Zip _____

Phone (h) _____ (c) _____

E-mail _____

Visa () MasterCard () Exp Date / _____

Card # _____

Name on Card _____

Signature _____

Please send this completed form with either your credit card information or check made payable to : Friends of Hilltop Arboretum, P.O. Box 82608, Baton Rouge, LA 70884

Annual Levels of Membership

If you enjoyed your time at hilltop and would like to keep Emory's dream alive and enhance the site, please consider joining Friends of Hilltop at one of the following levels:

\$35 Violet

- Reciprocal Access to 320+ Gardens
- 10% Discount on Plants at Plantfest
- Reduced Member Rates for Programs, Trips, Events
- Admission to Annual Member Luncheon
- E-Notices About Programs, Events and Activities

\$50 Azalea

- All Benefits at the Violet Level, plus:
- 10% Discount on Plants at Spring Fling Sale
 - Free Admission to PlantFest Teaser

\$75 Redbud

- All Benefits at the Above Levels, plus:
- 10% Discount on Plants at Year End Sale
 - 10% Discount at Gift Shop

\$100 Dogwood

BEST VALUE

- All Benefits at the Above Levels, plus:
- 10% Year-Round Discount on Plants at Hodge Podge Nursery
 - Free Hilltop T-Shirt (New Selection Each Year)
 - 10% Discount Children's Camps

\$250 Magnolia

- All Benefits at the Above Levels, plus:
- Free Admission to 9 Discover Nature Programs
 - 10% Discount on Consulting Arborist Fee

\$500 Cypress

- All Benefits at the Above Levels, plus:
- Margaret Stones Big Leaf Magnolia Print or Choose 4 from over a dozen Nature-themed Pocket Guides
 - 2 Tickets to Annual Symposium

\$1,000 Live Oak

- All Benefits at the Above Levels, plus:
- 1 Fee for Professional Photography Session Waived
 - One Guided Plant Tour of Hilltop with Refreshments
 - 15% Discount on Facility Rental

